

EcoStone

SUSTAINABLE
LIFESTYLE



EcoStone

SUSTAINABLE
LIFESTYLE



EcoStone elevates a **sustainable lifestyle** that revolves around our many environments. For lifestyles that **value design, beauty, and sustainability**, EcoStone offers a **larger contribution**.

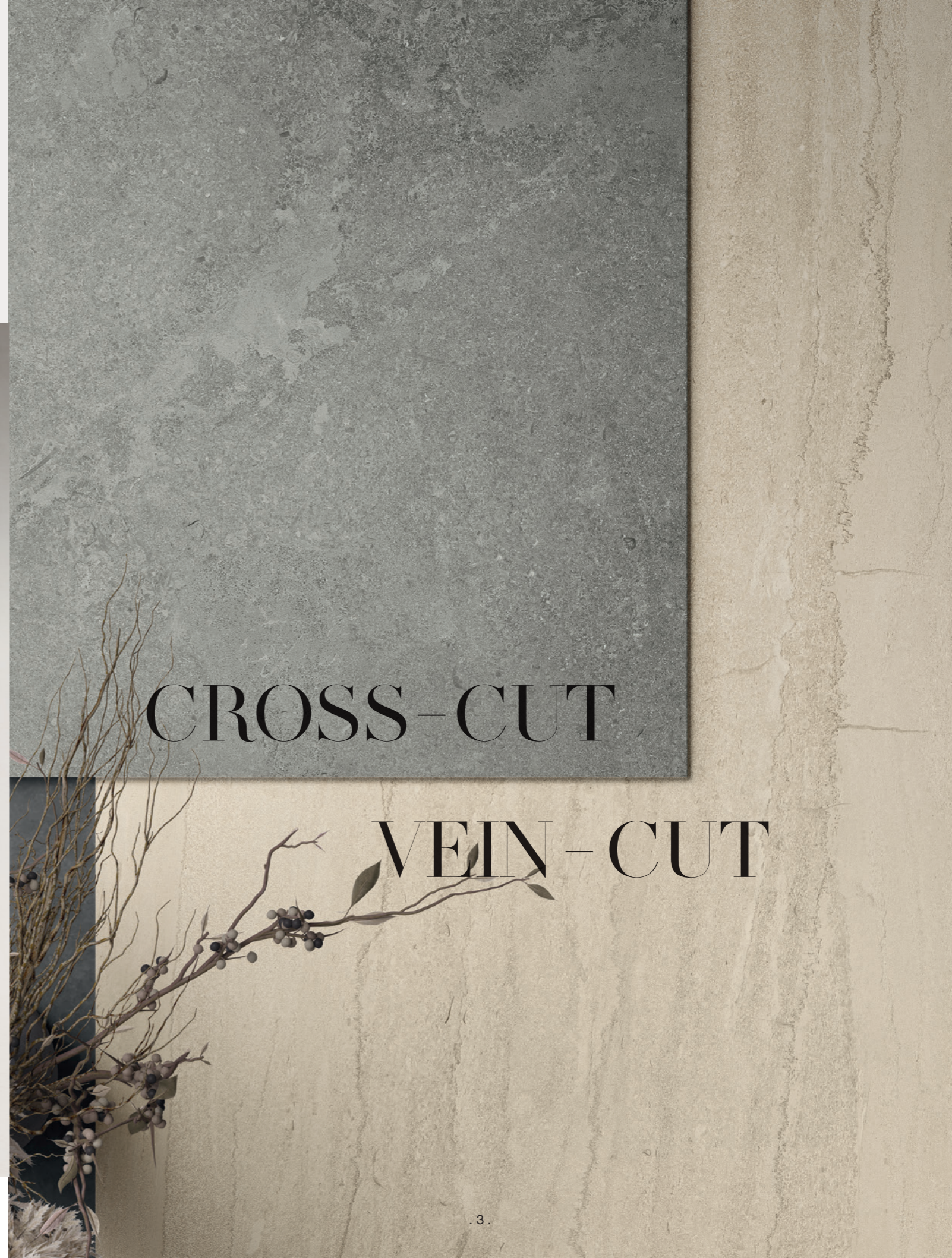
A contribution to design with the impact of large format; to beauty for any environment with the versatility of stone looks; and to a sustainable lifestyle through carbon neutrality.

The same effort that we put into design, we put into caring for the environment.

EcoStone pays homage to the timeless beauty of travertine with two distinctive surface finishes inspired by different cutting techniques.

Cross-Cut, which emphasises the cloudlike patterns that make this prestigious natural material unique, and **Vein-Cut**, showing the banding and linear lines of the veining in the natural material.

2 SURFACES



CROSS-CUT

VEIN-CUT

5 COLORS



4 SIZES

2 MOSAICS

2 DECOS



Available for
Fog and Mist colors

Cross-Cut



48"x110"
6 mm



48"x48"



24"x48"



12"x24"



Cross-Cut
2"x2"

Vein-Cut



48"x110"
6 mm



24"x48"



12"x24"



Vein-Cut
1"x3"



48"x110"
6 mm



CROSS-CUT

FOG



- 1104329**
RECTIFIED MATTE 12"x24"
- 1104298**
RECTIFIED MATTE 24"x48"
- 1104394**
RECTIFIED MATTE 48"x48"
- 1104344**
MOSAIC (2"x2")
RECTIFIED MATTE 12"x12"
- 1104349**
BULLNOSE
RECTIFIED MATTE 3"x12"

JUTE



- 1104330**
RECTIFIED MATTE 12"x24"
- 1104299**
RECTIFIED MATTE 24"x48"
- 1104395**
RECTIFIED MATTE 48"x48"
- 1104345**
MOSAIC (2"x2")
RECTIFIED MATTE 12"x12"
- 1104350**
BULLNOSE
RECTIFIED MATTE 3"x12"

MIST



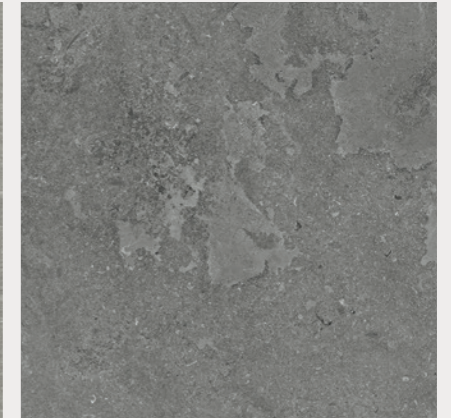
- 1104331**
RECTIFIED MATTE 12"x24"
- 1104300**
RECTIFIED MATTE 24"x48"
- 1104396**
RECTIFIED MATTE 48"x48"
- 1104346**
MOSAIC (2"x2")
RECTIFIED MATTE 12"x12"
- 1104351**
BULLNOSE
RECTIFIED MATTE 3"x12"

FOSSIL



- 1104332**
RECTIFIED MATTE 12"x24"
- 1104301**
RECTIFIED MATTE 24"x48"
- 1104397**
RECTIFIED MATTE 48"x48"
- 1104347**
MOSAIC (2"x2")
RECTIFIED MATTE 12"x12"
- 1104352**
BULLNOSE
RECTIFIED MATTE 3"x12"

PUMICE



- 1104333**
RECTIFIED MATTE 12"x24"
- 1104302**
RECTIFIED MATTE 24"x48"
- 1104398**
RECTIFIED MATTE 48"x48"
- 1104348**
MOSAIC (2"x2")
RECTIFIED MATTE 12"x12"
- 1104353**
BULLNOSE
RECTIFIED MATTE 3"x12"

VEIN-CUT

FOG



- 1104334**
RECTIFIED MATTE 12"x24"
- 1104303**
RECTIFIED MATTE 24"x48"
- 1104339**
MOSAIC (1"x3")
RECTIFIED MATTE 12"x12"
- 1104354**
BULLNOSE
RECTIFIED MATTE 3"x12"

JUTE



- 1104335**
RECTIFIED MATTE 12"x24"
- 1104304**
RECTIFIED MATTE 24"x48"
- 1104340**
MOSAIC (1"x3")
RECTIFIED MATTE 12"x12"
- 1104355**
BULLNOSE
RECTIFIED MATTE 3"x12"

MIST



- 1104336**
RECTIFIED MATTE 12"x24"
- 1104305**
RECTIFIED MATTE 24"x48"
- 1104341**
MOSAIC (1"x3")
RECTIFIED MATTE 12"x12"
- 1104356**
BULLNOSE
RECTIFIED MATTE 3"x12"

FOSSIL



- 1104337**
RECTIFIED MATTE 12"x24"
- 1104306**
RECTIFIED MATTE 24"x48"
- 1104342**
MOSAIC (1"x3")
RECTIFIED MATTE 12"x12"
- 1104357**
BULLNOSE
RECTIFIED MATTE 3"x12"

PUMICE



- 1104338**
RECTIFIED MATTE 12"x24"
- 1104307**
RECTIFIED MATTE 24"x48"
- 1104343**
MOSAIC (1"x3")
RECTIFIED MATTE 12"x12"
- 1104358**
BULLNOSE
RECTIFIED MATTE 3"x12"

48x110
CROSS-CUT

FOG



6 mm

1104374
RECTIFIED MATTE 48"x110"

JUTE



6 mm

1104375
RECTIFIED MATTE 48"x110"

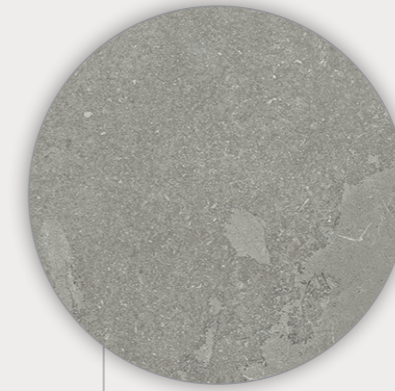
MIST



6 mm

1104376
RECTIFIED MATTE 48"x110"

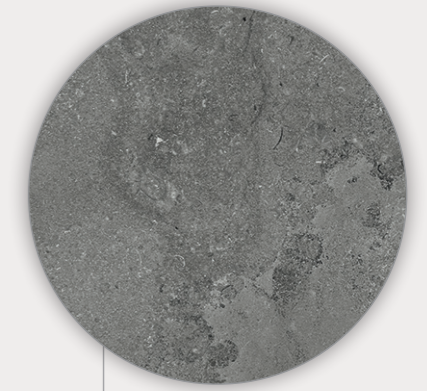
FOSSIL



6 mm

1104377
RECTIFIED MATTE 48"x110"

PUMICE

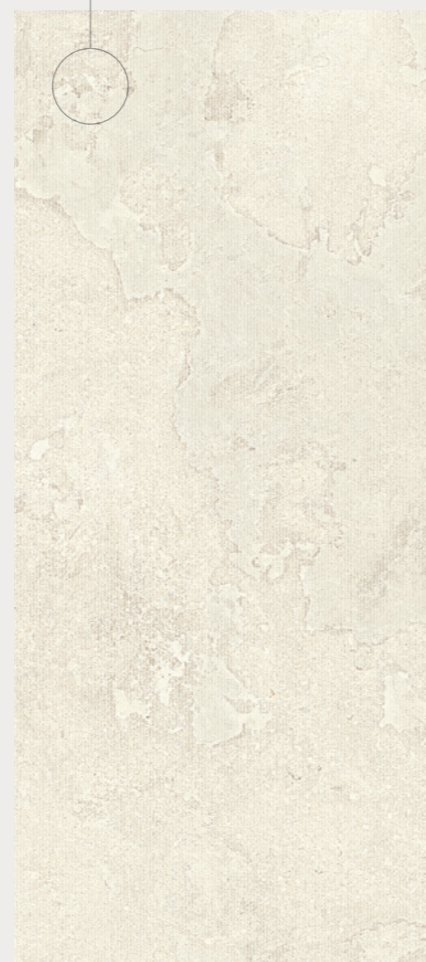


6 mm

1104378
RECTIFIED MATTE 48"x110"

48X110 DECO
CROSS-CUT

FOG Decos



6 mm

1104384
DECO CHEVRON
RECTIFIED MATTE 48"x110"

6 mm

1104386
DECO FLUTE
RECTIFIED MATTE 48"x110"

MIST Decos



6 mm

1104385
DECO CHEVRON
RECTIFIED MATTE 48"x110"

6 mm

1104387
DECO FLUTE
RECTIFIED MATTE 48"x110"

48x110
VEIN - CUT

FOG



6 mm

1104379
RECTIFIED MATTE 48"x110"

JUTE



6 mm

1104380
RECTIFIED MATTE 48"x110"

MIST



6 mm

1104381
RECTIFIED MATTE 48"x110"

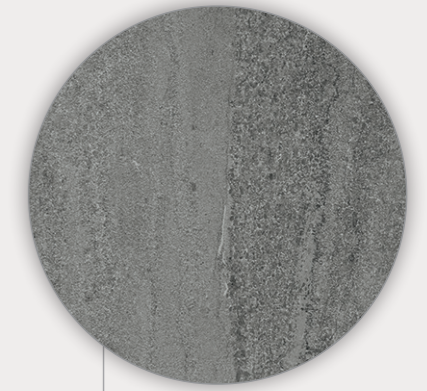
FOSSIL



6 mm

1104382
RECTIFIED MATTE 48"x110"

PUMICE



6 mm

1104383
RECTIFIED MATTE 48"x110"

SUSTAINABLE LIFE – STYLE



Floor EcoStone_24"x48"_Pumice_Vein-Cut

FAÇADE



Installing LED lights can lower consumption and improve energy efficiency by as much as 75% - 90%.



Wall EcoStone_48"x110"_Mist_Vein-Cut





Wall EcoStone_48"x110"_Pumice_Cross-Cut

COMMERCIAL



Talk about Eco-friendly - Porcelain Tile is the most durable material that can be used as a surface. It is the most cost-effective flooring option in the long run, and consequently the most sustainable choice.



Floor EcoStone_24"x48"_Pumice_Cross-Cut
Wall EcoStone_48"x110"_Mist_Cross-Cut
EcoStone_48"x110"_Mist_Chevron_Deco



EcoStone_24"x48"_Mist_Cross-Cut



Floor EcoStone_24"x48"_Fog_Vein-Cut
Wall EcoStone_48"x110"_Fog_Vein-Cut

LIVING



MILE[®]stone contributes to the annual removal of > 5000 Metric Tonnes of CO₂ from the Atmosphere.



Floor EcoStone_48"x48"_Fossil_Cross-Cut
Wall EcoStone_48"x110"_Pumice_Vein-Cut



EcoStone_48"x110"_Pumice_Vein-Cut



Floor EcoStone_48"x48"_Mist_Cross-Cut
Wall EcoStone_48"x110"_Pumice_Flute_Deco



KITCHEN



MILE® stone uses local and regional raw materials that are non-flammable and contain no VOCs for better air quality.



Floor EcoStone_24"x48"_Jute_Cross-Cut
Wall EcoStone_48"x110"_Fossil_Vein-Cut



Wall EcoStone_1"x3"_Jute_Vein-Cut_Mosaic

BATHROOM



Using MILE[®] *stone* tiles results in the lowest embodied carbon flooring, that will serve the full life of your project.



Floor EcoStone_24"x48"_Fog_Cross-Cut
Wall EcoStone_48"x110"_Fog_Chevron_Deco
EcoStone_24"x48"_Fog_Cross-Cut
EcoStone_1"x3"_Pumice_Vein-Cut_Mosaic



Wall 2"x2"_Mist_Cross-Cut_Mosaic
Countertop 48"x110"_Mist_Vein-Cut



Floor EcoStone_48"x48"_Mist_Cross-Cut
Wall EcoStone_48"x110"_Mist_Chevron_Deco

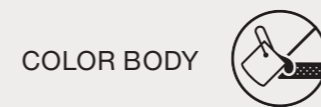


Floor EcoStone_48"x48"_Pumice_Cross-Cut
Wall EcoStone_48"x110"_Mist_Flute_Deco

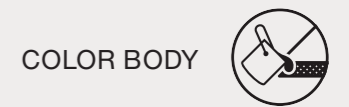


Floor EcoStone_48"x48"_Jute_Cross-Cut
Wall EcoStone_48"x110"_Jute_Vein-Cut_Fog_Flute_Deco

Rectified-color body



Rectified-color body



CROSS - CUT

Colors	12"x24" 8 mm	24"x48" 8 mm	48"x48" 8 mm	48"x110" 6 mm	48"x110" DECO 6 mm	12"x12" mosaic (2"x2") 8 mm	Bullnose 3"x12" 8 mm
FOG	1104329	1104298	1104394	1104374	Chevron 1104384 Flute 1104386	1104344	1104349
JUTE	1104330	1104299	1104395	1104375	-	1104345	1104350
MIST	1104331	1104300	1104396	1104376	Chevron 1104385 Flute 1104387	1104346	1104351
FOSSIL	1104332	1104301	1104397	1104377	-	1104347	1104352
PUMICE	1104333	1104302	1104398	1104378	-	1104348	1104353

VEIN - CUT

Colors	12"x24" 8 mm	24"x48" 8 mm	48"x110" 6 mm	12"x12" mosaic (1"x3") 8 mm	Bullnose 3"x12" 8 mm
FOG	1104334	1104303	1104379	1104339	1104354
JUTE	1104335	1104304	1104380	1104340	1104355
MIST	1104336	1104305	1104381	1104341	1104356
FOSSIL	1104337	1104306	1104382	1104342	1104357
PUMICE	1104338	1104307	1104383	1104343	1104358

Technical Specifications

This product meets or exceeds all standards described in ANSI A137.1.

SPECS	TEST METHOD	INDUSTRY STANDARD	MILE [®] stone VALUES	
WATER ABSORPTION	ASTM C373	≤0.5%	≤0.4%	
CERTIFIED PORCELAIN TILE <small>0.5% or less water absorption</small>	ASTM C373	0.5%	Meeting the water absorption criteria of the American national standard PTCA	
SURFACE WEAR RESISTANCE	ANSI A137.1	Surface Wear-resistance properties of glazed vitreous and porcelain tiles.	ALL RESIDENTIAL / COMMERCIAL	
CHEMICAL RESISTANCE	ASTM C650	A tile sample is placed in continuous contact with a variety of chemicals for 24 hours. No sample must show visible defects.	NOT AFFECTED	
D.C.O.F. AcuTest [®]	ANSI A326.3	≥0.42 WET	≥0.42 WET	>0.55 WET 2CM
STAIN RESISTANCE	ASTM C1378	Surfaces are exposed to staining agents for 24 hours followed by four cleaning procedures. Results are recorded post cleaning.	NOT AFFECTED	
	BREAKING STRENGTH GAUGED PORCELAIN	ASTM C1505	≥175 lbf	≥200 lbf
	BREAKING STRENGTH	ASTM C648	≥275 lbf	≥300 lbf
	BREAKING STRENGTH OUTDOOR 2CM	ASTM 1505	2000 lbf (10.9 kN)	≥2500 lbf
RESISTANCE TO FREEZE	ASTM C1026	A tile sample is subjected to repeated processes of freezing and thawing. Sample must show no visible defects.	RESISTANT	
WARPAGE EDGE	ASTM C485	±0.40% or ±0.05 in (±1.8 mm)	± 0.40%	Rectified
WARPAGE DIAGONAL	ASTM C485	±0.40% or ±0.07 in (±1.8 mm)	± 0.40%	Rectified
WEDGING	ASTM C502	±0.25% or ±0.03 in (±0.8 mm)	± 0.25%	Rectified
WARPAGE EDGE	ASTM C485	±0.50% or ±0.07 in (±1.8 mm)	± 0.50%	Calibrated
WARPAGE DIAGONAL	ASTM C485	±0.50% or ±0.07 in (±1.8 mm)	± 0.50%	Calibrated
WEDGING	ASTM C502	±0.50% or ±0.08 in (±2.0 mm)	± 0.50%	Calibrated
THICKNESS	ASTM C499	Range: ± 0.04 in	≤0.04 in	

• Due to the inherent nature of fired porcelain tile, it is important to note that the coefficient of friction may vary within and between product runs.



Green Certifications & Accreditations

DESCRIPTION
Defines post-consumer content of as much as 3% recycled glass which reduces landfill impact.
Defines pre-consumer content of as much as 45% recycled material which reduces our carbon footprint.
Florim USA sources >95% raw material within a 500 mile radius, which results in a smaller carbon footprint.
Tile Council of North America and the American National Standards Institute's standard for sustainability and environmental impact.
A declaration that Florim USA values the environment and works daily to minimize our adverse impact upon it.
The Health Product Declaration Collaborative transparency declaration for all of Florim USA's naturally occurring materials.
Declare labels disclose all intentionally added ingredients and residuals present in the final product. Being Red List Free means the worst materials, chemicals, and elements for human and environmental health are not present within our products.
Certification of plant and product specific Environmental Product Declaration (EPD) which tracks environmental impacts from the production of porcelain tile.
Underwriter's Laboratories certification of low emitting materials. Florim USA is Green Guard Gold certified.
Bureau Veritas Standards Program verifies and certifies both pre- and post-consumer recycled content.
Florim USA actively participates in the Tile Council of North America which allows us to be on the forefront of advances in the tile industry and its standards.
USGBC is committed to suit a more sustainable life. Florim USA supports this mission by manufacturing products which aid architects in achieving USGBC certification.
Florim USA's sustainability and social practices support the mission of The International Living Future Institute which strives to create a socially just, culturally rich, and ecologically restorative community.
The Tennessee Recycling Coalition is dedicated to promoting recycling and sustainable material management practices, and awarded Florim USA the Tennessee Recycler of the Year award for 2020.

Progress that invests in the entire society

As an active member of the U.S Green Building Council, MILE[®]stone spreads awareness to the community and encourages the use of building solutions through environmentally friendly practices. Our products positively contribute to the requirements for obtaining the LEED (Leadership in Energy and Environmental Design) and WELL (IWBI) certifications.

A commitment to environmental sustainability and responsibility

We are committed to conscious development that minimizes the negative impact of manufacturing production on the environment. Our general approach to sustainability intersects with our business strategy to embrace three areas of responsibility: economic, social, and environmental. Some ways we prove this are:

- Products containing as much as 45% recycled content.
- Post-consumer recycled content levels as much as 3%.
- Zero industrial wastewater discharge.
- A 99% internal process recycling rate.
- Local sourcing of >95% raw materials (within 500-mile radius of factory) resulting in low transportation related carbon emissions.

MILE[®]stone is taking these and other steps, as well as actively investing to reduce carbon emissions to ensure that we reach full carbon neutrality by 2030.



Cleaning & Maintenance /
Routine Care Instructions



Scan the QR code with your smartphone.

MADE IN THE USA

